

Castaway Keys

making waves and making music

2017-2018



Name: _____ Grade: _____

| # | TASKS | OVERVIEW | STATUS |
|---|--|---|--------|
| Seashells Collected During Lessons | | | |
| Technique Cove (white) | | | |
| 1. | Surf's Up for Scales p. 4 | Improve speed and dexterity by studying scales. <i>Collect 1 seashell.</i> | |
| 2. | Arpeggios Aweigh p. 5 | Improve flexibility and accuracy by studying arpeggios. <i>Collect 1 seashell.</i> | |
| 3. | Chord Fjord p. 6-7 | Improve strength and harmonization by studying chords. <i>Collect 1 seashell.</i> | |
| Repertoire Reef (pink) | | | |
| 4. | Memory Harbor p. 8 | Secure the ability to play at any moment by committing repertoire to memory. <i>Collect 1 seashell.</i> | |
| 5. | Musical Eras Estuary p. 9 | Play music from the Baroque, Classical, Romantic, and Contemporary eras. <i>Collect 1 seashell.</i> | |
| 6. | Collaborative Creek p. 10 | Collaborate with another pianist or instrumentalist on an ensemble piece. <i>Collect up to 3 seashells.</i> | |
| Seashells Collected On Your Own | | | |
| Listening Lagoon (blue) | | | |
| 7. | Baroque Bayou p. 11-12 | Listen and analyze piano music from the Baroque era. <i>Collect 1 seashell.</i> | |
| 8. | Classical Canal p. 13-14 | Listen and analyze piano music from the Classical era. <i>Collect 1 seashell.</i> | |
| 9. | Romantic Reservoir p. 15-16 | Listen and analyze piano music from the Romantic era. <i>Collect 1 seashell.</i> | |
| 10. | Impressionistic Inlet p. 17-18 | Listen and analyze piano music from the Impressionistic era. <i>Collect 1 seashell.</i> | |
| 11. | Modern Marsh p. 19-20 | Listen and analyze piano music from the Modern era. <i>Collect 1 seashell.</i> | |
| Research and Theory Islands (green) | | | |
| 12. | Composer Research p. 21 | Study the life and work of a piano composer of your choice. <i>Collect 1 seashell.</i> | |
| 13. | Music Literacy Program (MLP) p. 22 | Demonstrate your knowledge of piano and music theory by taking a written exam fit for your level. <i>Collect up to 3 seashells.</i> | |
| Seashells Collected with Parent Assistance | | | |
| Performance Bay (yellow) | | | |
| 14. | Music Artistry Program (MAP) p. 23 | Prepare two piano solos and receive feedback from a visiting artist teacher. <i>Collect up to 3 seashells.</i> | |
| 15. | Public Performance p. 24-25 | Perform at school, retirement home, or other public venue. <i>Collect an unlimited number of seashells.</i> | |
| 16. | Concert Attendance p. 26-29 | Attend a concert or recital featuring a professional pianist. <i>Collect an unlimited number of seashells.</i> | |

Castaway Keys

2017-2018

Explore the Castaway Keys and collect seashells as you visit Technique Cove, Repertoire Reef, Listening Lagoon, Research and Theory Islands, and Performance Bay!

Things you've done during summer 2017 and the 2017-2018 school year count toward Castaway Keys' seashell-collecting requirements. There is no specific order in which seashells must be collected; you can work at several locations simultaneously or skip from one location to another. Castaway Keys is due **May 6, 2018**.



Stay on Course

Make a good effort to complete each week's assigned scales, arpeggios, chords, and memory assignments. It's much easier to check a few things off each week than to tackle a huge load at the end of the year.



Come Out of Your Shell

Don't be afraid to try something new or work on something you wouldn't normally. Musical Eras Estuary, Collaborative Creek, and Public Performance are meant to broaden your repertoire and challenge you to swim out of your comfort zone. You may discover something new that you really like!



Dive Right In

Seashells under *Seashells Collected On Your Own* can be completed any time at home. The only things you need are internet access, your Castaway Keys packet, and a pencil. These are meant to be fun and informative, so don't delay in getting started.



Parents: Be on the Lookout

Parents, please plan early for seashells under *Seashells Completed with Parent Assistance*. Your student will need your help completing Public Performance, the Music Artistry Program (MAP), and Concert Attendance. Public Performance opportunities will be offered at least once a month. If you're ready to play, complete it as soon as you can! Registration for the Music Artistry Program occurs in early January. Concerts and recitals that are free and local are limited: go to the first one you can. However, if you don't mind trekking to Seattle or paying admission, you'll find a lot more options and opportunities.



Castaway Keys

| Sea Level | Seashells Collected | Award |
|-------------------------|---------------------|----------|
| Swiftly Cruising | 20+ | Diamond |
| Smooth Sailing | 18-19 | Ruby |
| Calm Waters | 16-17 | Sapphire |
| Stormy Seas | 14-15 | Amethyst |
| Anchors Aweigh | 12-13 | |
| Shipwrecked | 1-11 | |

Sailing Timeline

| Details | Important Dates |
|--|--|
| <i>Seashells Completed On Your Own</i> <ul style="list-style-type: none"> Listening Lagoon Research Island | Best Completed by December 2017 |
| <i>Seashells Completed During Lessons</i> <ul style="list-style-type: none"> Technique Cove Repertoire Reef | Best Completed by April 2018 |
| Public Performance | Opportunities Offered Once a Month |
| Studio Recitals | December 2017 and May/June 2018 |
| <i>Recitals are a studio requirement and all students are expected to participate.</i> | |
| Music Artistry Program (MAP) <i>Recommended for students in grades K and up who are serious about their piano study.</i> | Fri-Sat, February 23-24, 2018 Inglewood Presbyterian Church 7718 NE 141 st St, Kirkland Registration Deadline: January 5, 2018 |
| Music Literacy Program (MLP) <i>Required for students in grades 2 and up.</i> | Sat, April 28, 2018 (for Eastside students) Eastside Bahai Center 16007 NE 8 th St, Bellevue Sat, May 5, 2018 (for Southside students) Nativity Lutheran Church 17707 140 th Ave SE, Renton |
| Castaway Keys Final Due Date | On or BEFORE Sunday, May 6, 2018 |

Map of Castaway Keys



1. Surf's Up for Scales

Welcome to the first stop of Technique Cove! Here you will collect one seashell for meeting your scale goals.

SEASHELL

Collect 1 Seashell

| MAJOR Tempo: _____ Key | <i>Pentascale</i> | <i>1 Octave pear</i> | <i>2 Octaves apple</i> | <i>3 Octaves cantaloupe</i> | <i>4 Octaves watermelon</i> | <i>4 Octave banana splits</i> |
|--|-------------------|--------------------------|----------------------------|---------------------------------|---------------------------------|-----------------------------------|
| C | | | | | | |
| G | | | | | | |
| D | | | | | | |
| A | | | | | | |
| E | | | | | | |
| B | | | | | | |
| F#/Gb | | | | | | |
| Db | | | | | | |
| Ab | | | | | | |
| Eb | | | | | | |
| Bb | | | | | | |
| F | | | | | | |

| MINOR Tempo: _____ Key | <i>Natural</i> | <i>Harmonic raise 7th from natural minor</i> | <i>Melodic ascending raise 6th, 7th descending = natural</i> | <i>1 Octave pear</i> | <i>2 Octaves apple</i> | <i>3 Octaves cantaloupe</i> | <i>4 Octaves water melon</i> |
|--|----------------|---|--|--------------------------|----------------------------|---------------------------------|--------------------------------------|
| A | | | | | | | |
| E | | | | | | | |
| B | | | | | | | |
| F# | | | | | | | |
| C# | | | | | | | |
| G# | | | | | | | |
| D#/Eb | | | | | | | |
| Bb | | | | | | | |
| F | | | | | | | |
| C | | | | | | | |
| G | | | | | | | |
| D | | | | | | | |

2. Arpeggios Aweigh

Welcome to the second stop of Technique Cove! Here you will collect one seashell for meeting your arpeggio goals.

Collect 1 Seashell

SEASHELL

| MAJOR Tempo: _____ Key | | Cross Hand Style | 1 Octave | 2 Octaves | 3 Octaves | 4 Octaves 4/4 time, accent beat 1 | 4 Octave banana splits |
|----------------------------------|-------|---------------------|----------|-----------|-----------|---|---------------------------|
| | | | | | | | |
| C | white | | | | | | |
| G | white | | | | | | |
| D | w-b-w | | | | | | |
| A | w-b-w | | | | | | |
| E | w-b-w | | | | | | |
| B | w-b-b | | | | | | |
| F#/Gb | black | | | | | | |
| Db | oreo | | | | | | |
| Ab | oreo | | | | | | |
| Eb | oreo | | | | | | |
| Bb | b-w-w | | | | | | |
| F | white | | | | | | |

| MINOR Tempo: _____ Key | | Cross Hand Style | 1 Octave | 2 Octaves | 3 Octaves | 4 Octaves 4/4 time, accent beat 1 | 4 Octave banana splits |
|----------------------------------|-------|---------------------|----------|-----------|-----------|---|---------------------------|
| A | white | | | | | | |
| E | white | | | | | | |
| B | w-w-b | | | | | | |
| F# | oreo | | | | | | |
| C# | oreo | | | | | | |
| G# | oreo | | | | | | |
| D#/Eb | black | | | | | | |
| Bb | b-b-w | | | | | | |
| F | w-b-w | | | | | | |
| C | w-b-w | | | | | | |
| G | w-b-w | | | | | | |
| D | white | | | | | | |

3. Chord Fjord

Welcome to the third stop of Technique Cove! Here you will collect one seashell for meeting your chord goals.

Collect 1 Seashell

SEASHELL

| Key | Major | Minor | Diminished | Augmented |
|-------|-------|-------|------------|-----------|
| C | | | | |
| G | | | | |
| D | | | | |
| A | | | | |
| E | | | | |
| B | | | | |
| F#/Gb | | | | |
| Db | | C# | | |
| Ab | | G# | | |
| Eb | | Eb/D# | | |
| Bb | | | | |
| F | | | | |

Seventh Chords

| Name | Major 7 th "Major" modifies the 7 th | Dominant 7 th | Minor 7 th "Minor" modifies the triad | Half-Diminished 7 th / Minor 7 (b5) Chord alterations follow the 7 | (Fully) Diminished 7 th |
|-----------|---|-------------------------------------|---|--|------------------------------------|
| Structure | Major Triad + major 7 th | Major Triad + minor 7 th | Minor Triad + minor 7 th | Dim Triad + minor 7 th | Dim Triad + Dim 7 th |
| C | C E G B | C E G Bb | C Eb G Bb | C Eb Gb Bb | C Eb Gb Bbb |
| G | | | | | |
| D | | | | | |
| A | | | | | |
| E | | | | | |
| B | | | | | |
| F#/Gb | | | | | |
| Db | | | | | |
| Ab | | | | | |
| Eb | | | | | |
| Bb | | | | | |
| F | | | | | |

Getting Comfortable with Chords

Chord Inversions

| Key | Triad Inversions MAJOR <i>Root – 1st – 2nd – Root</i> I-I ₆ -I _{6/4} -I | Triad Inversions MINOR <i>Root – 1st – 2nd – Root</i> i-i ₆ -i _{6/4} -i | Diatonic Chords MAJOR <i>Stay within the key!</i> I-ii-iii-IV-V-vi-vii ^o | |
|--------------|---|---|---|------------------------|
| C | | | | <i>with inversions</i> |
| G | | | | |
| D | | | | |
| A | | | | |
| E | | | | |
| B | | | | |
| F#/Gb | | | | |
| Db | | C# | | |
| Ab | | G# | | |
| Eb | | Eb/D# | | |
| Bb | | | | |
| F | | | | |

Chord Progressions

| Key | I Chord in Root I-IV _{6/4} -I-V _{6/5} -I | I Chord in 1 st Inversion I ₆ -IV-I ₆ -V _{4/2} -I | I Chord in 2 nd Inversion I _{6/4} -IV ₆ -I _{6/4} -V ₇ -I _{6/4} |
|--------------|---|--|---|
| C | | | |
| G | | | |
| D | | | |
| A | | | |
| E | | | |
| B | | | |
| F#/Gb | | | |
| Db | | | |
| Ab | | | |
| Eb | | | |
| Bb | | | |
| F | | | |

Lead Sheets: play ____ pieces using lead sheets

| # | Date | Title of Piece | Chord Progression |
|---|------|----------------|-------------------|
| 1 | | | |
| 2 | | | |
| 3 | | | |

4. Memory Harbor

Welcome to the first stop of Repertoire Reef! Here you will collect one seashell for meeting your memory goal.

Collect 1 Seashell

SEASHELL

Memory Goal: _____ measures

| # | Date | Title of Piece | Number of Measures | Running Total of Measures Memorized |
|----|------|----------------|--------------------|-------------------------------------|
| 1 | | | | |
| 2 | | | | |
| 3 | | | | |
| 4 | | | | |
| 5 | | | | |
| 6 | | | | |
| 7 | | | | |
| 8 | | | | |
| 9 | | | | |
| 10 | | | | |
| 11 | | | | |
| 12 | | | | |
| 13 | | | | |
| 14 | | | | |
| 15 | | | | |
| 16 | | | | |
| 17 | | | | |
| 18 | | | | |
| 19 | | | | |
| 20 | | | | |
| 21 | | | | |
| 22 | | | | |
| 23 | | | | |
| 24 | | | | |
| 25 | | | | |

5. Musical Eras Estuary

SEASHELL

Welcome to the second stop of Repertoire Reef! Here you will collect one seashell for studying and playing pieces from the four historical music periods.

Collect 1 Seashell

Baroque Era (1600-1750)

Famous Baroque composers include Bach, Vivaldi, and Handel. Piano music of the Baroque era was often written with each hand playing its own melody or "voice." This style of writing is called *polyphonic*. Baroque piano pieces were usually written in *binary* form. Composers frequently wrote pieces with dance titles. One of the most popular dances was the *minuet*.

| | |
|----------------|--|
| Baroque Piece: | |
| Composer: | |

Classical Era (1750-1820)

Famous Classical composers include Mozart, Haydn, and Beethoven. Piano music of the Classical era was often written with the right hand playing a melody and the left hand playing an accompaniment. This style of writing is called *homophonic*. Classical piano pieces were usually written in *ternary* form. Although many composers still wrote *minuets* during the Classical period, a new type of piece called *sonatina* became very popular.

| | |
|------------------|--|
| Classical Piece: | |
| Composer: | |

Romantic Era (1820-1910)

Famous Romantic composers include Chopin, Mendelssohn, and Schumann. Piano music of the Romantic era was often written with long, beautiful melodies and complicated accompaniments. Romantic piano pieces frequently have descriptive titles and are called *character pieces*. The *waltz* became a popular dance which replaced the *minuet*.

| | |
|-----------------|--|
| Romantic Piece: | |
| Composer: | |

Contemporary Era (Impressionistic or 20th Century) (1900-2000)

Famous Contemporary composers include Debussy, Bartok, and Shostakovich. Contemporary piano music is written in many different styles. Contemporary composers frequently experimented with unusual harmonies and rhythms to give their music a distinctly different sound than music of the earlier periods.

| | |
|---------------------|--|
| Contemporary Piece: | |
| Composer: | |

What's your favorite musical era? _____

6. Collaborative Creek

Welcome to the third stop of Repertoire Reef! Here you will collect up to three seashells by collaborating with another pianist or instrumentalist on an ensemble piece. Your ensemble partner may be another student, sibling, friend, or parent.

Collect up to 3 Seashells

To earn additional seashells, works must be in differing ensemble combinations. For example, if you do:

3 Piano Duets = you earn 1 seashell

1 Piano Duet + 1 Piano Trio + 1 Piano/Violin Work = you earn 3 seashells

Ensemble pieces can be performed for Samantha during lessons or may be video-recorded.

Qualifying Ensemble Combinations:

- Piano Duet/Trio, etc.
- Piano Accompaniment + Other Instrument(s) or Voice
- Duets with Samantha **do not** qualify ☹️

SEASHELLS

| | |
|--------------------------|--|
| Title of Ensemble Piece: | |
| Composer: | |
| Ensemble Partner(s): | |
| Instrumentation: | |

| | |
|--------------------------|--|
| Title of Ensemble Piece: | |
| Composer: | |
| Ensemble Partner(s): | |
| Instrumentation: | |

| | |
|--------------------------|--|
| Title of Ensemble Piece: | |
| Composer: | |
| Ensemble Partner(s): | |
| Instrumentation: | |

Listening Lagoon

Welcome to the Listening Lagoon! Here you will collect one seashell from each of the five stops: Baroque Bayou, Classical Canal, Romantic Reservoir, Impressionistic Inlet, and Modern Marsh.

Listen carefully to the two assigned pieces at each stop and answer the listening questions. As you listen, you may draw, doodle, or write your thoughts about each piece in the extra space provided.

YouTube links for each piece are posted on www.samanthayeung.com/castawaykeys. You can also search for the listed pieces on YouTube on your own.

7. Baroque Bayou

Collect 1 Seashell Listening to Music from the Baroque Era

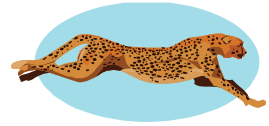
Music Links: www.samanthayeung.com/castawaykeys

SEASHELL

#1. Title of Piece: *Prelude No. 3 in D Minor by Johann Sebastian Bach*

How would you describe the **tempo** of this piece?

Largo Larghetto Adagio Andante Moderato Allegretto Allegro Vivace Presto



What **dynamics** do you hear?

pp p mp mf f ff crescendo decrescendo

What **articulations** do you hear?

Staccato (Bouncy) Legato (Smooth) Tenuto (Pressing Deeply) Marcato (Accented)

What **itches** do you hear?

Very Low Low Middle High Very High

How would you describe the **mood** or **character** of this piece?

Agitato (Agitated)
Dolce (Sweet)
Furioso (Angry)
Mesto (Sad)

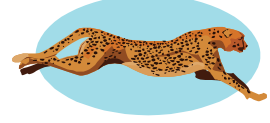
Brillante (Glittering)
Energico (Energetic)
Giocoso (Merry, Happy)
Scherzando (Playful)

Cantabile (Singing)
Expressivo (Expressive)
Maestoso (Majestic)
Tranquillamente (Calm)

#2. Title of Piece: *Little Prelude in F Major by Bach*

How would you describe the **tempo** of this piece?

Largo Larghetto Adagio Andante Moderato Allegretto Allegro Vivace Presto



What **dynamics** do you hear?

pp p mp mf f ff crescendo decrescendo

What **articulations** do you hear?

Staccato (Bouncy) Legato (Smooth) Tenuto (Pressing Deeply) Marcato (Accented)

What **itches** do you hear?

Very Low Low Middle High Very High

How would you describe the **mood** or **character** of this piece?

Agitato (Agitated)

Brillante (Glittering)

Cantabile (Singing)

Dolce (Sweet)

Energico (Energetic)

Expressivo (Expressive)

Furioso (Angry)

Giocoso (Merry, Happy)

Maestoso (Majestic)

Mesto (Sad)

Scherzando (Playful)

Tranquillamente (Calm)

Which piece is your favorite? **Prelude No. 3** or **Little Prelude in F Major**? Why?

DOODLE SPACE

8. Classical Canal

SEASHELL

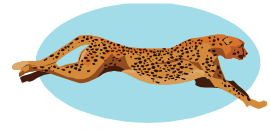
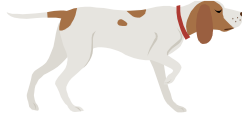
Collect 1 Seashell Listening to Music from the Classical Era

Music Links: www.samanthayeung.com/castawaykeys

#1. Title of Piece: **"Tempest" Piano Sonata, Third Movement by Beethoven**

How would you describe the **tempo** of this piece?

Largo Larghetto Adagio Andante Moderato Allegretto Allegro Vivace Presto



What **dynamics** do you hear?

pp p mp mf f ff crescendo decrescendo

What **articulations** do you hear?

Staccato (Bouncy) Legato (Smooth) Tenuto (Pressing Deeply) Marcato (Accented)

What **pitches** do you hear?

Very Low Low Middle High Very High

How would you describe the **mood** or **character** of this piece?

Agitato (Agitated)
Dolce (Sweet)
Furioso (Angry)
Mesto (Sad)

Brillante (Glittering)
Energico (Energetic)
Giocoso (Merry, Happy)
Scherzando (Playful)

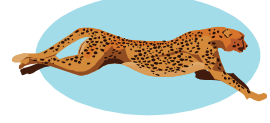
Cantabile (Singing)
Expressivo (Expressive)
Maestoso (Majestic)
Tranquillamente (Calm)

DOODLE SPACE

#2. Title of Piece: **Sonata in F Major by Haydn**

How would you describe the **tempo** of this piece?

Largo Larghetto Adagio Andante Moderato Allegretto Allegro Vivace Presto



What **dynamics** do you hear?

pp p mp mf f ff crescendo decrescendo

What **articulations** do you hear?

Staccato (Bouncy) Legato (Smooth) Tenuto (Pressing Deeply) Marcato (Accented)

What **itches** do you hear?

Very Low Low Middle High Very High

How would you describe the **mood** or **character** of this piece?

Agitato (Agitated)

Brillante (Glittering)

Cantabile (Singing)

Dolce (Sweet)

Energico (Energetic)

Expressivo (Expressive)

Furioso (Angry)

Giocoso (Merry, Happy)

Maestoso (Majestic)

Mesto (Sad)

Scherzando (Playful)

Tranquillamente (Calm)

Which piece is your favorite? **Beethoven's "Tempest" Sonata** or **Haydn's Sonata in F Major**? Why?

DOODLE SPACE

9. Romantic Reservoir

SEASHELL

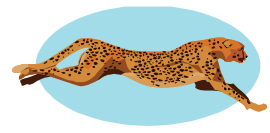
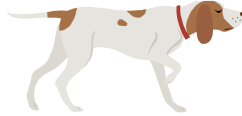
Collect 1 Seashell Listening to Music from the Romantic Era

Music Links: www.samanthayeung.com/castawaykeys

#1. Title of Piece: **Traumerei by Schumann**

How would you describe the **tempo** of this piece?

Largo Larghetto Adagio Andante Moderato Allegretto Allegro Vivace Presto



What **dynamics** do you hear?

pp p mp mf f ff crescendo decrescendo

What **articulations** do you hear?

Staccato (Bouncy) Legato (Smooth) Tenuto (Pressing Deeply) Marcato (Accented)

What **pitches** do you hear?

Very Low Low Middle High Very High

How would you describe the **mood** or **character** of this piece?

Agitato (Agitated)
Dolce (Sweet)
Furioso (Angry)
Mesto (Sad)

Brillante (Glittering)
Energico (Energetic)
Giocoso (Merry, Happy)
Scherzando (Playful)

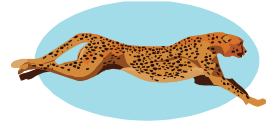
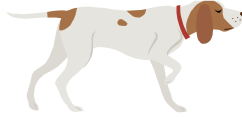
Cantabile (Singing)
Expressivo (Expressive)
Maestoso (Majestic)
Tranquillamente (Calm)

DOODLE SPACE

#2. Title of Piece: ***Fantasia Impromptu by Chopin***

How would you describe the **tempo** of this piece?

Largo Larghetto Adagio Andante Moderato Allegretto Allegro Vivace Presto



What **dynamics** do you hear?

pp p mp mf f ff crescendo decrescendo

What **articulations** do you hear?

Staccato (Bouncy) Legato (Smooth) Tenuto (Pressing Deeply) Marcato (Accented)

What **itches** do you hear?

Very Low Low Middle High Very High

How would you describe the **mood** or **character** of this piece?

Agitato (Agitated)

Brillante (Glittering)

Cantabile (Singing)

Dolce (Sweet)

Energico (Energetic)

Expressivo (Expressive)

Furioso (Angry)

Giocoso (Merry, Happy)

Maestoso (Majestic)

Mesto (Sad)

Scherzando (Playful)

Tranquillamente (Calm)

Which piece is your favorite? **Schumann's Traumerei** or **Chopin's Fantasia Impromptu**?
Why?

DOODLE SPACE

10. Impressionistic Inlet

SEASHELL

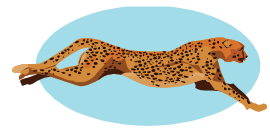
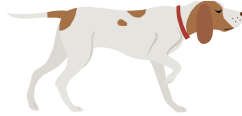
Collect 1 Seashell Listening to Music from the Impressionistic Era

Music Links: www.samanthayeung.com/castawaykeys

#1. Title of Piece: Arabesque No. 1 by Debussy

How would you describe the **tempo** of this piece?

Largo Larghetto Adagio Andante Moderato Allegretto Allegro Vivace Presto



What **dynamics** do you hear?

pp p mp mf f ff crescendo decrescendo

What **articulations** do you hear?

Staccato (Bouncy) Legato (Smooth) Tenuto (Pressing Deeply) Marcato (Accented)

What **pitches** do you hear?

Very Low Low Middle High Very High

How would you describe the **mood** or **character** of this piece?

Agitato (Agitated)
Dolce (Sweet)
Furioso (Angry)
Mesto (Sad)

Brillante (Glittering)
Energico (Energetic)
Giocoso (Merry, Happy)
Scherzando (Playful)

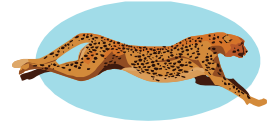
Cantabile (Singing)
Expressivo (Expressive)
Maestoso (Majestic)
Tranquillamente (Calm)

DOODLE SPACE

#2. Title of Piece: **Passepied by Debussy**

How would you describe the **tempo** of this piece?

Largo Larghetto Adagio Andante Moderato Allegretto Allegro Vivace Presto



What **dynamics** do you hear?

pp p mp mf f ff crescendo decrescendo

What **articulations** do you hear?

Staccato (Bouncy) Legato (Smooth) Tenuto (Pressing Deeply) Marcato (Accented)

What **itches** do you hear?

Very Low Low Middle High Very High

How would you describe the **mood** or **character** of this piece?

Agitato (Agitated)

Brillante (Glittering)

Cantabile (Singing)

Dolce (Sweet)

Energico (Energetic)

Expressivo (Expressive)

Furioso (Angry)

Giocoso (Merry, Happy)

Maestoso (Majestic)

Mesto (Sad)

Scherzando (Playful)

Tranquillamente (Calm)

Which piece is your favorite? **Debussy's Arabesque No. 1** or **Debussy's Passepied**? Why?

DOODLE SPACE

11. Modern Marsh

SEASHELL

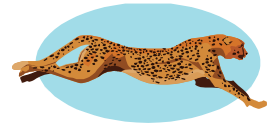
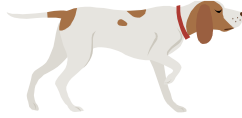
Collect 1 Seashell Listening to Music from the Modern Era

Music Links: www.samanthayeung.com/castawaykeys

#1. Title of Piece: ***Souvenir de Porto Rico by Gottschalk***

How would you describe the **tempo** of this piece?

Largo Larghetto Adagio Andante Moderato Allegretto Allegro Vivace Presto



What **dynamics** do you hear?

pp p mp mf f ff crescendo decrescendo

What **articulations** do you hear?

Staccato (Bouncy) Legato (Smooth) Tenuto (Pressing Deeply) Marcato (Accented)

What **pitches** do you hear?

Very Low Low Middle High Very High

How would you describe the **mood** or **character** of this piece?

Agitato (Agitated)
Dolce (Sweet)
Furioso (Angry)
Mesto (Sad)

Brillante (Glittering)
Energico (Energetic)
Giocoso (Merry, Happy)
Scherzando (Playful)

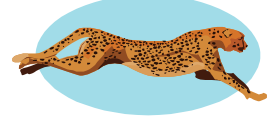
Cantabile (Singing)
Expressivo (Expressive)
Maestoso (Majestic)
Tranquillamente (Calm)

DOODLE SPACE

#2. Title of Piece: **Etude Op. 72, No. 6 by Moszkowski**

How would you describe the **tempo** of this piece?

Largo Larghetto Adagio Andante Moderato Allegretto Allegro Vivace Presto



What **dynamics** do you hear?

pp p mp mf f ff crescendo decrescendo

What **articulations** do you hear?

Staccato (Bouncy) Legato (Smooth) Tenuto (Pressing Deeply) Marcato (Accented)

What **itches** do you hear?

Very Low Low Middle High Very High

How would you describe the **mood** or **character** of this piece?

Agitato (Agitated)

Brillante (Glittering)

Cantabile (Singing)

Dolce (Sweet)

Energico (Energetic)

Expressivo (Expressive)

Furioso (Angry)

Giocoso (Merry, Happy)

Maestoso (Majestic)

Mesto (Sad)

Scherzando (Playful)

Tranquillamente (Calm)

Which piece is your favorite? **Gottschalk's Souvenir de Porto Rico** or **Moszkowski's Etude**? Why?

DOODLE SPACE

SEASHELL

- Students in grades K-1 may omit question 6.
- Students in grades 5 and up must use **complete sentences**.
- If you've done this before, you must pick a different composer.
- You may pick a different composer not on this list if approved by Samantha.

| | | | | |
|------------|-----------|--------|--------------|--------------|
| Bach | Chopin | Grieg | Mozart | Schumann |
| Beethoven | Clementi | Handel | Purcell | Scriabin |
| Brahms | Debussy | Haydn | Rachmaninoff | Shostakovich |
| Burgmuller | Ginastera | Joplin | Schubert | Tchaikovsky |

| | |
|---|--|
| <p>1) Composer's Full Name <i>Example: Ludwig van Beethoven</i></p> | |
| <p>2) Composer's Years of Birth and Death <i>Example: 1770-1827</i></p> | |
| <p>3) Which era did the composer compose in? <i>Example: Beethoven composed during the Classical Era.</i></p> | <ul style="list-style-type: none"> • Baroque Era (1600-1750) • Classical Era (1750-1820) • Romantic Era (1820-1910) • Contemporary Era—sometimes divided into Impressionistic & 20th Century/Modern (1900-present) |
| <p>4) Composer's Place of Birth and Death <i>Example: Beethoven was born in Bonn, Germany and died in Vienna, Austria.</i></p> | |
| <p>5) Composer's Nationality <i>Example: German</i></p> | |
| <p>6) List two famous pieces written by the composer and include which instrument(s) they were written for: <i>Example:</i> <i>1. Beethoven wrote Fur Elise for solo piano.</i> <i>2. Beethoven wrote the Ninth Symphony for orchestra.</i></p> | <p>1.</p> <p>2.</p> |

13. Music Literacy Program (MLP)

Welcome to the second stop of the Research and Theory Islands! Here you will collect up to three seashells by completing the WSM TA Music Literacy Program (MLP).

Collect up to 3 Seashells

- Collect **1 Seashell** by taking the exam.
- Collect **2 Seashells** by scoring 94% or higher.
- Collect **3 Seashells** by scoring 98% or higher.

There are ten levels of testing. Samantha will put you in the right level. You'll receive practice tests in the weeks prior to prepare.

Saturday, April 28, 2017 (for Eastside Students)

Eastside Bahai Center

16007 NE 8th St, Bellevue

Drop-in testing from 10 am-4 pm

Cost: \$5 per student

Saturday, May 5, 2017 (for Southside Students)

Nativity Lutheran Church

17707 140th Ave SE, Renton

Drop-in testing from 9 am-3 pm

Cost: \$5 per student

SEASHELL

| | |
|------------|--|
| MLP Level | |
| Your Score | |

14. Music Artistry Program (MAP)

Welcome to the first stop of Performance Bay! Here you will collect three seashells by participating in the WSM TA Music Artistry Program (MLP).

Collect 3 Seashells

The Music Artistry Program provides an opportunity for students to perform two polished pieces of contrasting styles for a visiting artist teacher and receive constructive feedback.

MAP Goals:

- Provide an educational experience which encourages goal setting, persistence, and creativity;
- Provide a performance opportunity for students where an objective evaluation of the student's skill and musicianship is made by an impartial and competent visiting artist teacher;
- Provide an opportunity for teachers to receive feedback from another professional musician.

Students Receive:

- Verbal Feedback
- Written Evaluation
- Certificate of Participation

Friday-Sunday, February 23-24, 2018

Registration Deadline is January 5, 2018

Inglewood Presbyterian Church

7718 NE 141st St, Kirkland

Cost: \$30 per student

SEASHELLS

| | |
|---|--------------|
| MAP Time Slot | |
| What did you perform at MAP? List titles and composers. | 1. 2. |
| Who was the visiting artist teacher? | |

15. Public Performance

Welcome to the second stop of Performance Bay! Here you may collect an unlimited number of seashells performing at school, church, retirement home, or other public venue.

Collect Unlimited Seashells

Qualifying Public Performances:

- School: school-wide talent show, class *Talent Fridays* and *Musical Cafés* (or similar), accompanying for another class (such as choir or eurythmy)
- Church: must be part of a program or event
- Retirement Homes and Communities
- Pianos in the Parks: find and play piano at various parks, the mall, and SeaTac Airport www.pianosintheparks.org
- Neighborhood Block Parties
- Weddings
- Farmers Markets

There will be monthly opportunities to perform at local retirement homes. Parents, please check your emails for these opportunities!

Performing at home for a family party or gathering does **not** qualify for community service.

To complete this task, complete the Public Performance Report and include some sort of proof of performance:

- Photo or Video of your performance
- Program
- Certificate (if provided)

You may earn an unlimited number of seashells for every qualifying public performance. If you need extra report forms, please ask!

SEASHELLS

Public Performance Report

| | |
|--|--|
| Location: | |
| Date: | |
| Time: | |
| What did you play? | |
| What event or purpose did your public performance serve? | <p><i>EXAMPLE:</i></p> <ul style="list-style-type: none"> <i>I played at my school for the talent show</i> <i>I played at the Crossroads Mall for the Bach in the Subways Recital</i> <i>I played at Emerald Heights for a Musical Gift Recital</i> |
| Proof of Performance <i>(photos and videos can be emailed to Samantha)</i> | <i>EXAMPLE: Photo, Video, Program, Certificate</i> |
| Parent Signature: | |

Public Performance Report

| | |
|--|--|
| Location: | |
| Date: | |
| Time: | |
| What did you play? | |
| What event or purpose did your public performance serve? | |
| Proof of Performance | |
| Parent Signature: | |

16. Concert Attendance

Welcome to the third and final stop of Performance Bay! Here you may collect an unlimited number of seashells by attending concerts featuring professional classical musicians.

Collect Unlimited Seashells

- Collect **unlimited seashells** for concerts or recitals you attend that feature a solo pianist.
- Collect **maximum 1 seashell** for a concert or recital you attend that does not feature a solo pianist.

YOU MUST BRING HOME A PROGRAM FROM THE CONCERT.

NO PROGRAM = NO SEASHELLS.

Qualifying Concerts to Collect Unlimited Seashells:

To earn unlimited seashells, concerts must feature a **solo pianist** playing any style of music.

- President's Piano Series at UW Meany Hall (appropriate for 12 years+, FREE youth tickets (2) with purchase of an adult ticket \$40+)
 - www.meanycenter.org
 - Location: Meany Hall, 4140 George Washington Ln NE, Seattle 98105
- Seattle Chamber Music Society Winter Festival (30 minute recitals appropriate for all ages, FREE; there is a full-length concert after each free recital that you are not required to stay for)
 - www.seattlechambermusic.org
 - Location: Nordstrom Recital Hall at Benaroya, 200 University Street, Seattle 98101
- University of Washington Brechemin Piano Series (60-90 minute recitals appropriate for 8 years+, \$5; you may exit quietly between works; features college students from the UW piano program)
 - music.washington.edu/events/performances
 - Location: Brechemin Auditorium, first floor of Music Building, Seattle 98195

SEASHELLS

- Ten Grands Seattle (highly recommended concert featuring 10 grand pianos and 10 pianists playing a variety of classical, jazz, and popular music; tickets \$42+)
 - www.tengrandsseattle.com
 - Location: Benaroya Hall, 200 University Street, Seattle 98101
- Ladies Musical Club of Seattle (check the program before you go to make sure a solo pianist will be performing; all concerts are FREE)
 - www.lmcseattle.org
 - Location: Varies, Seattle and Eastside

Qualifying Concerts to Collect Maximum 1 Seashell:

- Symphony Orchestra, Band, or Choral Concerts, UNLESS the pianist is featured in a prominent solo position, as in a Piano Concerto, or small chamber ensemble such as piano trio, quartet, or quintet, featuring less than five instruments.

Non-Qualifying Concerts:

- Pop Concerts: Justin Bieber, Taylor Swift
- Contemporary Music Festivals: Bumbershoot, Northwest Folklife Festival, etc. UNLESS there is an act featuring a solo pianist.
- Musicals and Musical Theater Productions
- Middle or High School Recitals and Concerts

If you need additional Concert Attendance Reports, please ask!

YOU MUST INCLUDE PROOF OF ATTENDANCE BY ATTACHING A PROGRAM TO YOUR REPORT.

Concert Attendance Report

| | |
|---|--|
| What concert did you attend? | |
| Concert Date: | |
| Concert Time: | |
| Concert Location: | |
| How many musicians performed at this concert? | |
| What instruments were played at this concert? | |
| What was your favorite piece performed at this concert? | |

YOU MUST BRING HOME A PROGRAM FROM THE CONCERT. NO PROGRAM = NO SEASHELLS.

Concert Attendance Report

| | |
|---|--|
| What concert did you attend? | |
| Concert Date: | |
| Concert Time: | |
| Concert Location: | |
| How many musicians performed at this concert? | |
| What instruments were played at this concert? | |
| What was your favorite piece performed at this concert? | |

YOU MUST BRING HOME A PROGRAM FROM THE CONCERT. NO PROGRAM = NO SEASHELLS.

AFFIX YOUR CONCERT PROGRAM(S) TO THIS PAGE.